

AISLE // 90



## Table of Content:

- / About Scope Developments
- / Our Vision & Mission
- / About Aisle 90
- / Map
- / Aisle 90 Design
- / Floor Plans
- / Our Spaces
- / Partners In Success
- / Contact Us



**SCOPE**

**DEVELOPMENTS**

## **ABOUT SCOPE DEVELOPMENTS**

### MOMENTS OF UNIQUENESS

Scope Development Is Your Trusted Partner In The World Of Real Estate. Established In 2017, Scope Developments Is An S.a.e Company Founded By A Board Of Experts With Over 20 Years Of Experience In Real Estate Appraisal. Our Journey Began With A Vision To Redefine The Real Estate Landscape, Setting New Industry Standard And Delivering Excellence In Every Project We Undertake.

At Scope Developments, we blend our rich experience with commitment to build projects that stand out. With a deep understanding of the real estate industry, we ensure that every project is up to the latest engineering and legal standards. Our dedication to the smallest details and the use of premium materials that are in line with international standards and specifications, are solid proof of our commitment to excellence.

**WE ARE NOT JUST  
BUILDING PROPERTIES;**



**WE ARE BUILDING TRUST,  
DREAMS AND A BRIGHTER FUTURE**





## OUR VISION

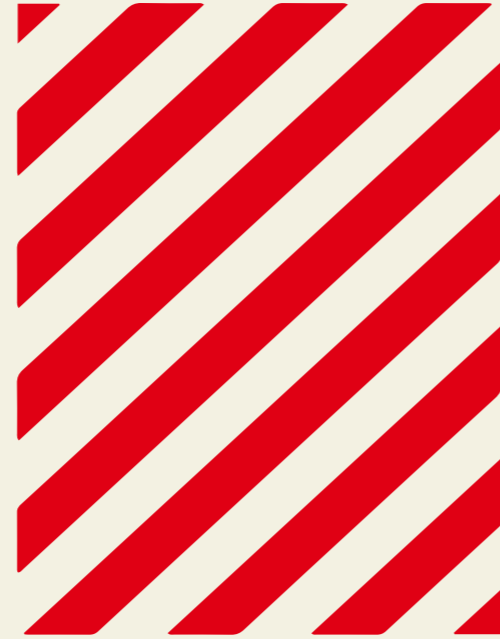
is to become a symbol of innovation and excellence in the real estate industry. We aim to create sustainable communities and landmark projects that redefine living and investment standards, setting new benchmarks for quality, trust and customer satisfaction

## OUR MISSION

is to use our deep expertise and commitment to deliver exceptional real estate projects. We are dedicated to creating value for our clients, investors and communities by following the highest standards in quality. We are not just building properties; we are building trust, dreams and a brighter future.



COMMERCIAL // ADMIN // MEDICAL



ABOUT

## Where Horizons Expand

Introducing Aisle 90, a premier development by Scope Developments, strategically designed to bridge North and South 90th Streets. Inspired by its unique location, Aisle 90 serves as a metaphorical and literal connection to your dreams, achievements, and goals. This visionary project offers a blend of medical, administrative, and commercial units, catering to business professionals looking to invest and thrive. Experience the unparalleled convenience and opportunity at Aisle 90, where your aspirations find their perfect address.

# AISLE // 90

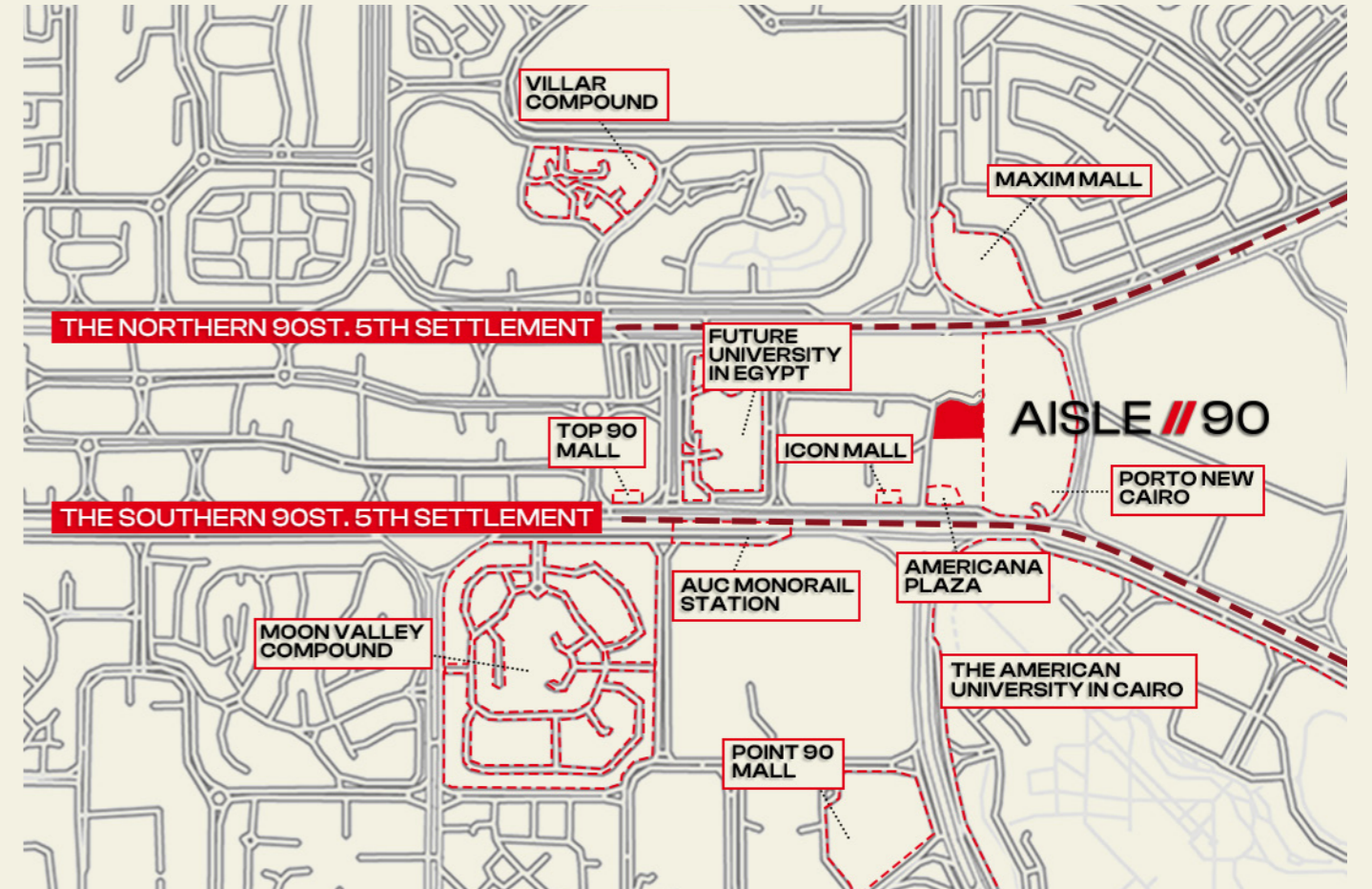
AISLE // 90





## Cairo's Vibrant Heart

Discover Aisle 90, a prime location that seamlessly connects North and South 90th Street. Strategically positioned near the American University in Cairo, Future University, and the monorail station, it offers easy access to vibrant spots like Americana Plaza, Point 90, Maxim Mall, and is right behind Porto New Cairo. Experience the convenience and lifestyle you've been looking for at Aisle 90.



AISLE // 90

**DESIGNS**





aisle // 90





AISLE // 90















COMMERCIAL // ADMIN // MEDICAL

**OUR**

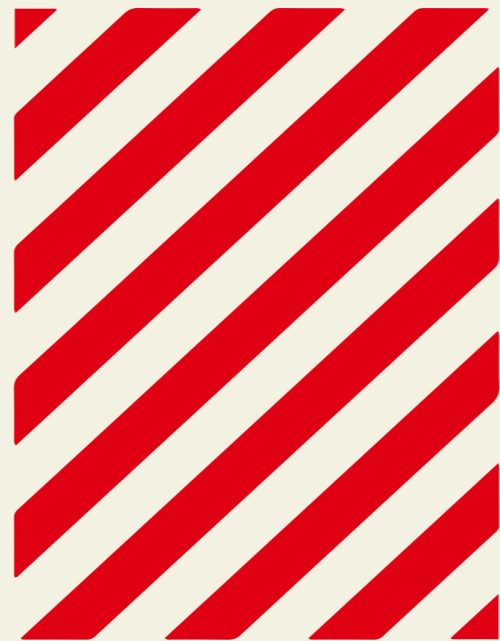


AISLE // 90

**SPACES**

## AISLE // 90

We redefine shopping with our exceptional commercial spaces. Located on the ground and first floors, these areas offer a diverse range of commercial opportunities, from vibrant F&B businesses to trendy retail stores and important services.



## COMMERCIAL // ADMIN // MEDICAL

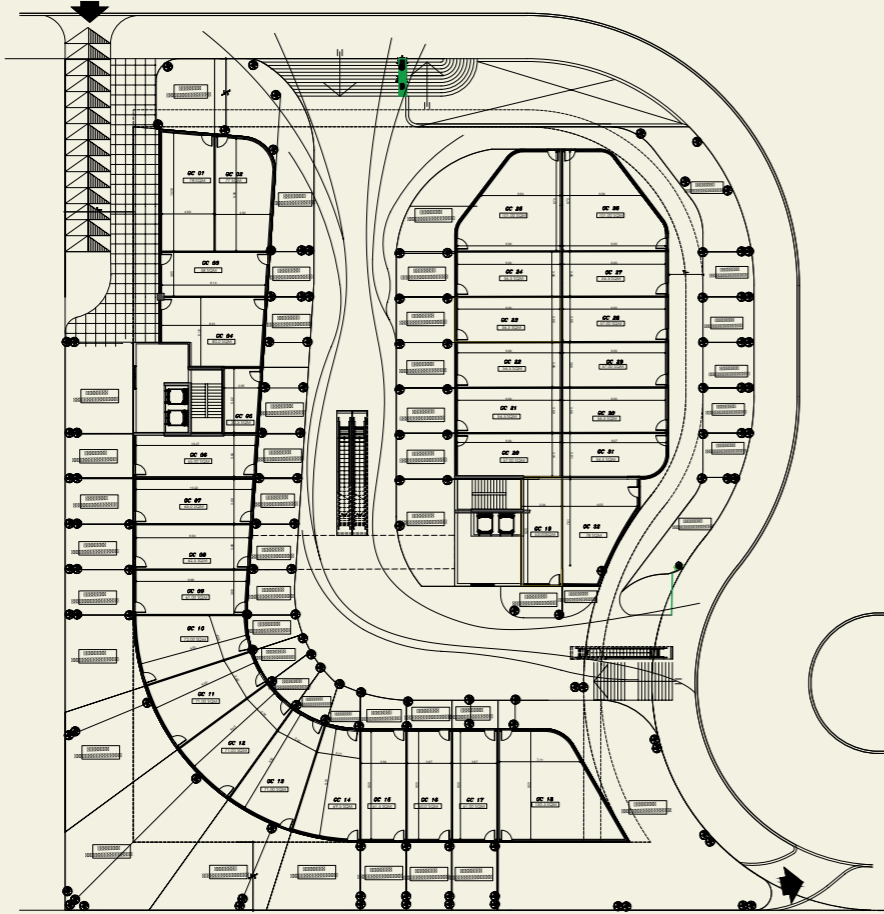


# COMMERCIAL

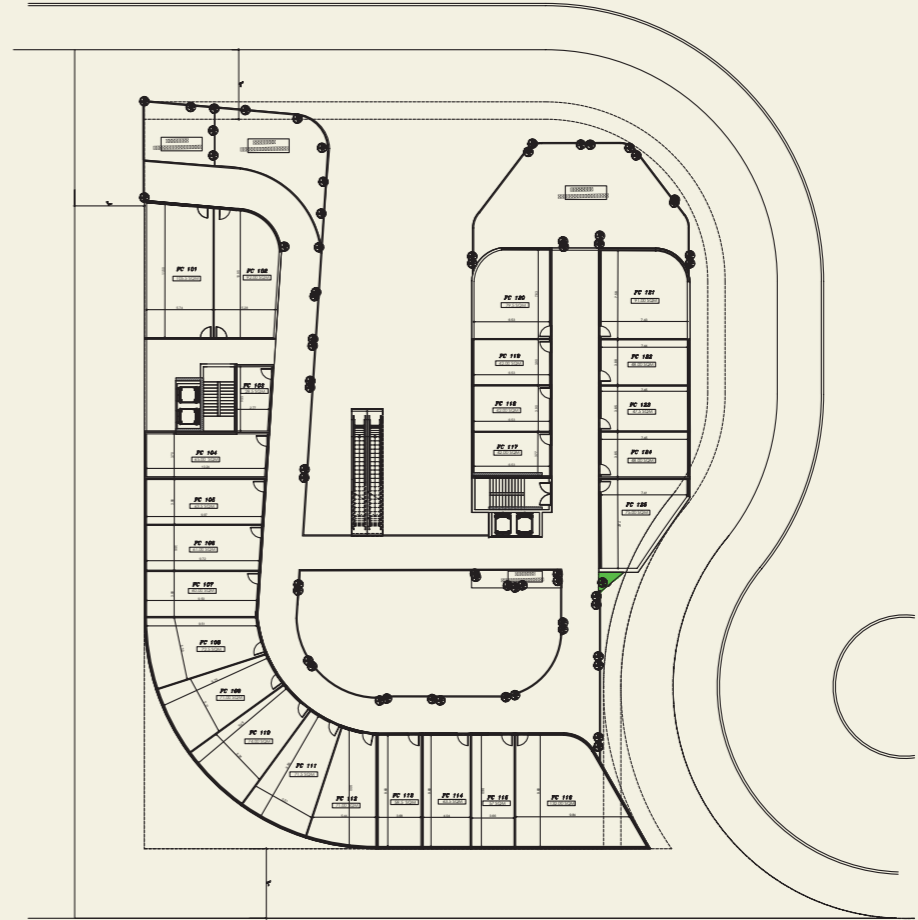
# UNITS



# GROUND FLOOR



# 1<sup>ST</sup> FLOOR





## AISLE // 90

Discover modern office spaces that redefine work-life balance. At Aisle 90, the prime location makes your daily commute easier, while the modern design of our administrative spaces inspires business efficiency. Whether you are a start-up or an established corporation, our offices provide the ideal environment for productivity.



## COMMERCIAL // ADMIN // MEDICAL



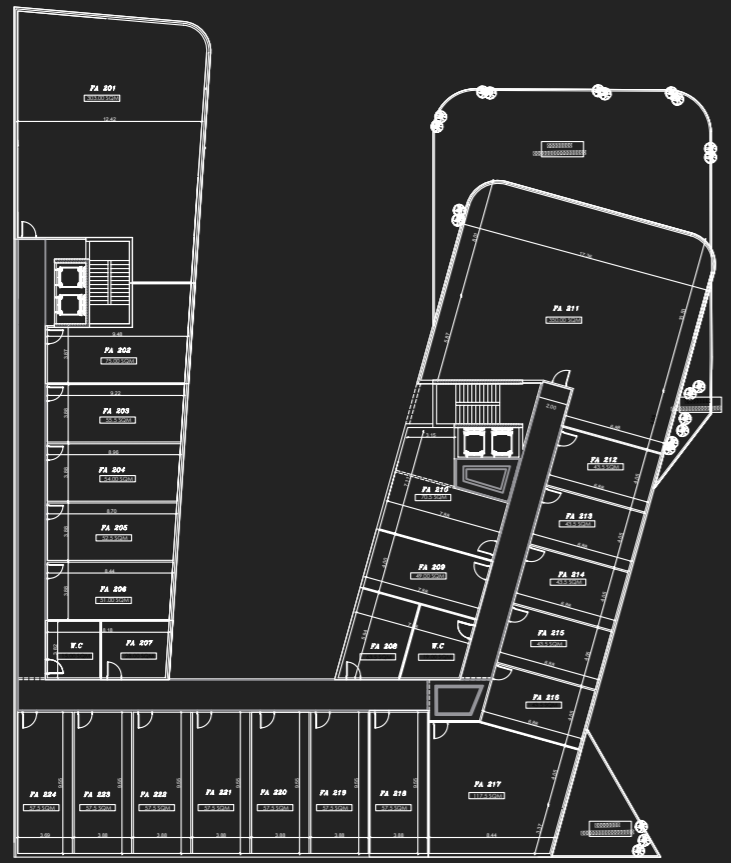
# ADMINISTRATIVE

# UNITS

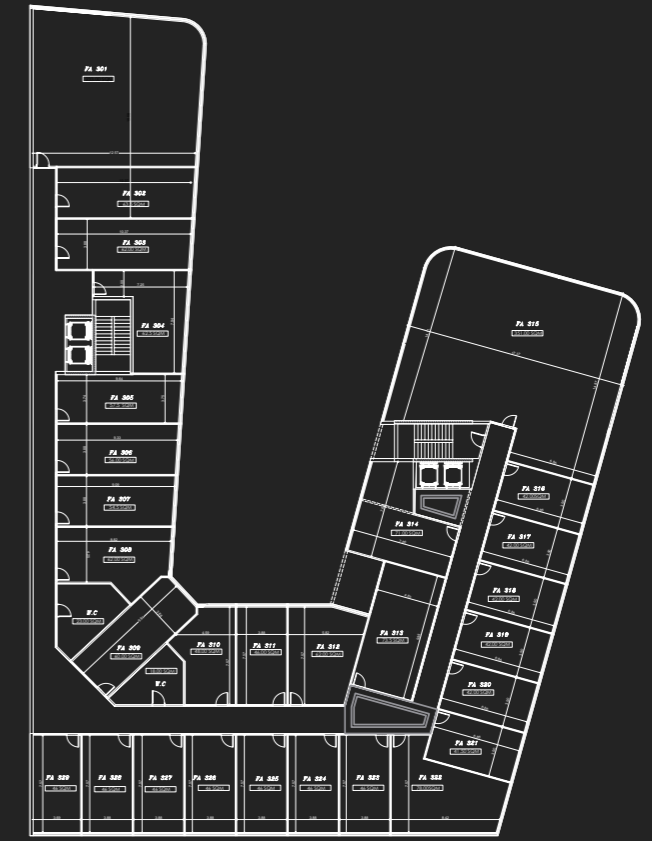




# 2<sup>ND</sup> FLOOR

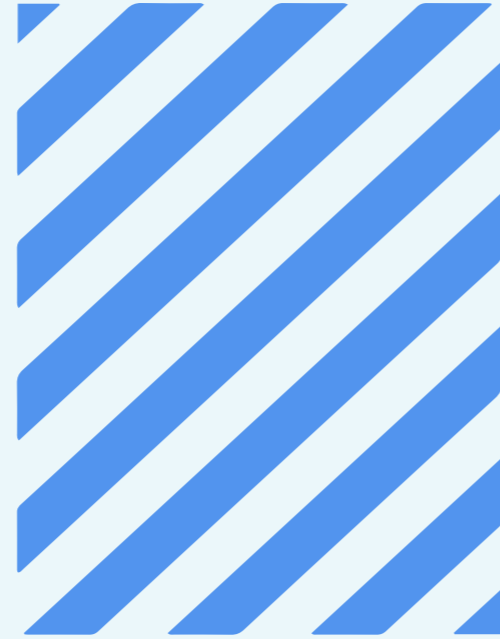


# 3<sup>RD</sup> FLOOR



## AISLE // 90

Caters to the medical community by providing well-designed medical units that elevate the patient experience. These spaces are carefully crafted to accommodate your profession's specific needs while ensuring your patients feel comfortable.



## COMMERCIAL // ADMIN // MEDICAL

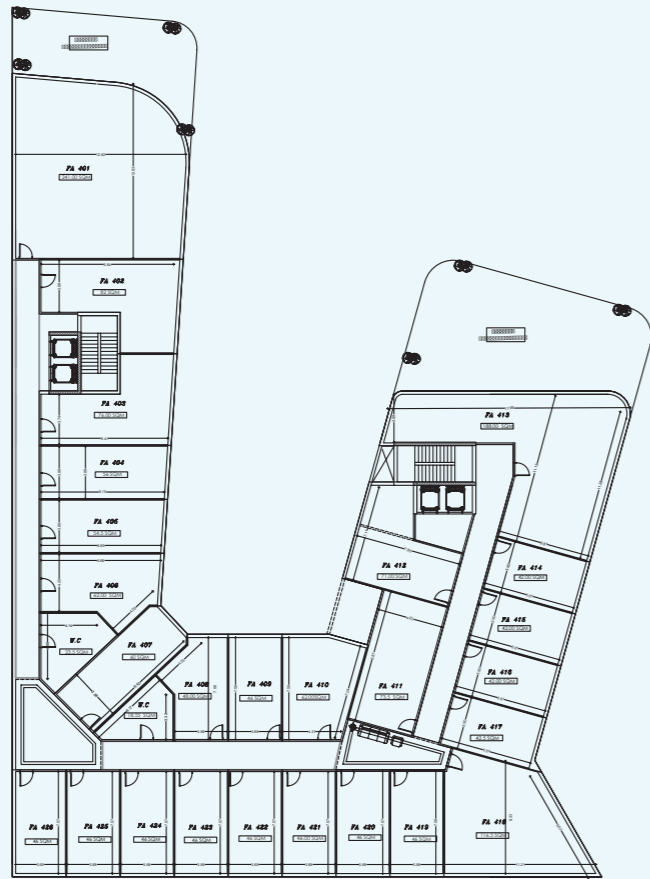


# MEDICAL

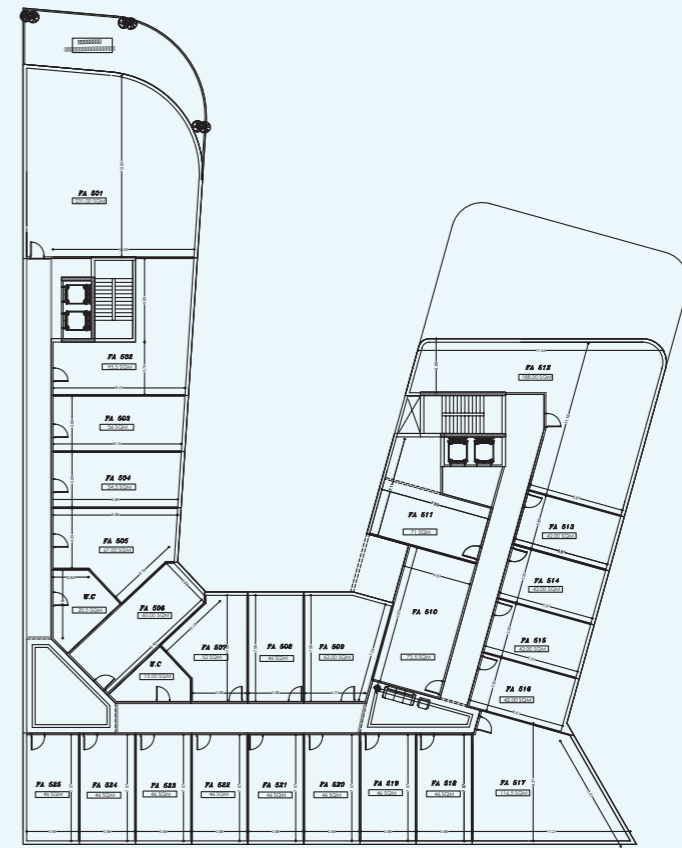
# UNITS



# 4<sup>TH</sup> FLOOR



# 5<sup>TH</sup> FLOOR



**PARTNERS**

**IN SUCCESS**



# OUR PARTNERS



Established in 1950, ACE Moharram Bakhoum is one of the oldest and most experienced multi-disciplinary engineering consulting companies in the world.

Honourly acting as the general consultant for all Scope developments projects. With over 70 years of success, Moharram Bakhtoum has one of the largest portfolios of infrastructure mega-projects under its belt. Through its cutting edge technologies, unparalleled expertise and desire to create impact, Moharram Bakhoum has become renowned for its ability to solve the most complex engineering problems, pushing the scientific state-of-art beyond the status quo.

# OUR PARTNERS



**SMARCHI**   
ARCHITECTURE

A dynamic and innovative firm specializing in contemporary architectural solutions. With a following of over 440 professionals, Smarch Architecture is dedicated to transforming spaces with creativity and expertise, setting new standards in design and functionality. Collaborating with Scope developments, as the Architectural consultant of Aisle 90.





# OUR PARTNERS



In partnership with Vodafone, one of the leading strategic and technological partners, to provide the latest integrated and advanced communication services at Aisle. This collaboration ensures that Aisle 90 is equipped with state-of-the-art telecommunications solutions, enhancing the overall experience for our tenants and visitors.



# OUR PARTNERS



With a proven track record of success and achievement in the construction industry, PCC is highly experienced in building execution and are responsible for the Aisle 90 construction works.

# Contact Us

📞 19872

📍 Mall Iris, 2nd Floor, City Central, Banks Center & Food Court,  
5th Settlement, New Cairo, Cairo, Egypt.

🌐 [www.scopeddevelopmentseg.com](http://www.scopeddevelopmentseg.com)

✉️ [info@scopeddevelopmentseg.com](mailto:info@scopeddevelopmentseg.com)

